

COMPONENTS MARKED 'DNP' SHOULD NOT BE POPULATED.
ASSEMBLY VARIANT: LMK61PDOA2

ZZI ■ Install label in silkscreened box after final wash. Text shall be 8 pt font. Text shall be per the Label Table in the PDF schematic.

ZZ2 ■ These assemblies are ESD sensitive, ESD precautions shall be observed.

ZZ3 ■ These assemblies must be clean and free from flux and all contaminants. Use of no clean flux is not acceptable.

ZZ4 ■ These assemblies must comply with workmanship standards IPC-A-610 Class 2, unless otherwise specified.

ZZ5 ■ Default Shunt settings: SH1_2-3 means short Pins 2-3 of J2 jumper.

ZZ6 ■ Default Shunt settings: SH2_2-3 means short Pins 2-3 of J3 jumper.

ZZ7 ■ Default Shunt settings: SH3_2-3 means short Pins 2-3 of OE jumper.

ZZ8 ■ Default Shunt settings: SH4_2-1 means short Pins 1-2 of OS jumper.

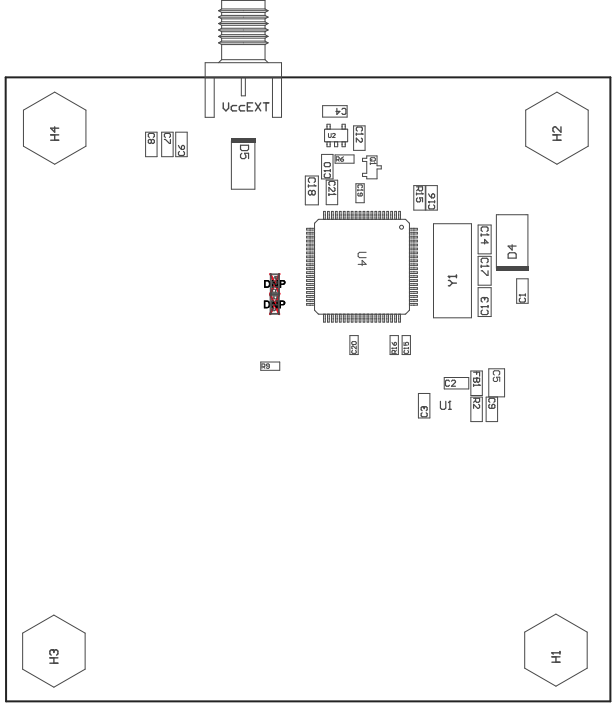
ZZ9 ■ Default Shunt settings: SH5_2-1 means short Pins 1-2 of FS0 jumper.

ZZ10■ Default Shunt settings: SH6_2-1 means short Pins 1-2 of FS1 jumper.

ZZ11■Default Shunt settings: SH7_2-3 means short Pins 2-3 of J7 jumper.

ZZ12■ Default Shunt settings: SH7_2-3 means short Pins 2-3 of J8 jumper.

PCB VIEWED FROM TOP SIDE	BOARD #: SU601349	REV: A	SUN REV: Not In VersionControl
IGNORE ->			
PLOT NAME = Top Assembly Drawing	GENERATED : 11/30/2016 3:19:32 PM		TEXAS INSTRUMENTS



COMPONENTS MARKED 'DNP' SHOULD NOT BE POPULATED.
ASSEMBLY VARIANT: LMK61PD0A2

PCB VIEWED FROM BOTTOM SIDE	BOARD #: SU601349	REV: A	SUN REV: Not In VersionControl
	IGNORE ->		
PLOT NAME = Bottom Assembly Drawing	GENERATED : 11/30/2016 3:19:33 PM	TEXAS INSTRUMENTS	